

# NBC-R4OC/5,0-BC5/R4OC - Patch cable



1227564

<https://www.phoenixcontact.com/us/products/1227564>

Please be informed that the data shown in this PDF document is generated from our online catalog. Please find the complete data in the user documentation. Our general terms of use for downloads are valid.



Patch cable, degree of protection: IP20, cable length: 5 m, number of positions: 8, CAT5, connection method: Pierce connection, connection cross section: AWG 26- 26, cable outlet: straight, Ethernet

## Your advantages

- Perfect for office, building, and protected industrial applications (e.g., in control cabinets)
- Worldwide approval with CE, UL, WEEE, and EAC
- Secure connection and disconnection with reliable locking clip protection
- Ideal EMC properties, thanks to 360° shielding
- Simultaneous power transmission with PoE++
- High-speed data transmission with up to 1 Gbps (CAT5)

## Commercial data

Item number	1227564
Packing unit	1 pc
Minimum order quantity	1 pc
Sales key	AB11
Product key	ABNABG
GTIN	4063151321413
Weight per piece (including packing)	250.6 g
Weight per piece (excluding packing)	236 g
Customs tariff number	85444290
Country of origin	CN

# NBC-R4OC/5,0-BC5/R4OC - Patch cable



1227564

<https://www.phoenixcontact.com/us/products/1227564>

## Technical data

### Product properties

Product type	Data cable preassembled
Sensor type	Ethernet
Number of positions	8
Shielded	yes
Cable outlet	straight

### Insulation characteristics

Overvoltage category	I
Degree of pollution	2

### Electrical properties

Rated voltage (III/2)	72 V
Transmission medium	Copper
Transmission characteristics (category)	CAT5
Power transmission	PoE++

### Mechanical properties

#### Mechanical data

Insertion force per signal contact	30.00 N
Extraction force per signal contact	50 N

### Material specifications

Flammability rating according to UL 94	V0
Contact material	Brass
Contact surface material	Au
Contact carrier material	PC
Outer sheath, material	LSZH

### Dimensions

Width	11.6 mm
Height	14.8 mm
Length	40 mm

### Connection data

#### Connection technology

Connection method	Pierce connection
-------------------	-------------------

#### Conductor connection

Connection method	Pierce connection
-------------------	-------------------

### Connector

# NBC-R40C/5,0-BC5/R40C - Patch cable



1227564

<https://www.phoenixcontact.com/us/products/1227564>

## Connection 1

Type	Plug straight RJ45
Shielded	yes
Handle color	gray
Insertion/withdrawal cycles	≥ 750
Degree of protection	IP20
Ambient temperature (operation)	-20 °C ... 80 °C

## Connection 2

Type	Plug straight RJ45
Shielded	yes
Handle color	gray
Insertion/withdrawal cycles	≥ 750
Degree of protection	IP20
Ambient temperature (operation)	-20 °C ... 80 °C

## Cable/line

Cable length	5.00 m
--------------	--------

## Ethernet, Type B, 8-pos., CAT5, LSZH [BC5]

Shielded	yes
Cable type	Ethernet, Type B, 8-pos., CAT5, LSZH
Cable type (abbreviation)	BC5
Cable structure	2x2xAWG26/7, S/UTP
External cable diameter	5.7 mm ±0.3 mm
Outer sheath, material	LSZH
External sheath, color	gray
Thickness, outer sheath	approx. 0.7 mm
Conductor material	Bare Cu litz wires
Conductor structure signal line	7x 0.16 mm
AWG signal line	26
Material wire insulation	PE
Single wire, number of litz wires	8
Wire diameter incl. insulation	0.85 mm
Single wire, cross section [AWG]	26
Shielding	S/UTP
Optical shield covering	70 %
Cable insulation resistance	≥ 5000 MΩ*km
Wave impedance	100 Ω
Loop resistance	≤ 148.00 Ω/km
Minimum bending radius, fixed installation	8 x D
Damping	3.2 dB (with 1 MHz) 6.01 dB (at 4 MHz) 9.49 dB (at 10 MHz)

# NBC-R4OC/5,0-BC5/R4OC - Patch cable



1227564

<https://www.phoenixcontact.com/us/products/1227564>

	12.07 dB (at 16 MHz)
	13.54 dB (at 20 MHz)
	17.11 dB (at 31.25 MHz)
	24.76 dB (at 62.5 MHz)
	31.99 dB (at 100 MHz)
Near end crosstalk attenuation (NEXT)	65.3 dB (with 1 MHz)
	56.3 dB (at 4 MHz)
	50.3 dB (at 10 MHz)
	47.2 dB (at 16 MHz)
	45.8 dB (at 20 MHz)
	42.9 dB (at 31.25 MHz)
	38.4 dB (at 62.5 MHz)
	35.3 dB (at 100 MHz)
Power-summed near end crosstalk attenuation (PSNEXT)	62.3 dB (with 1 MHz)
	53.3 dB (at 4 MHz)
	48.8 dB (at 8 MHz)
	47.3 dB (at 10 MHz)
	44.2 dB (at 16 MHz)
	42.8 dB (at 20 MHz)
	41.3 dB (at 25 MHz)
	39.9 dB (at 31.25 MHz)
	35.4 dB (at 62.5 MHz)
	32.3 dB (at 100 MHz)
Return attenuation (RL)	20 dB (with 1 MHz)
	23 dB (at 4 MHz)
	24.5 dB (at 8 MHz)
	25 dB (at 10 MHz)
	25 dB (at 16 MHz)
	25 dB (at 20 MHz)
	24.2 dB (at 25 MHz)
	23.3 dB (at 31.25 MHz)
	20.7 dB (at 62.5 MHz)
	19 dB (at 100 MHz)
Halogen-free	complying with IEC 60754-1/2
Flame resistance	IEC 60332-1-2/IEC 60332-3-24/CM
Ambient temperature (operation)	-20 °C ... 80 °C (Cable, flexible installation)
	-20 °C ... 80 °C (cable, fixed installation)

## Environmental and real-life conditions

### Ambient conditions

Degree of protection	IP20
Ambient temperature (operation)	-20 °C ... 80 °C
Ambient temperature (storage/transport)	0 °C ... 40 °C

# NBC-R4OC/5,0-BC5/R4OC - Patch cable



1227564

<https://www.phoenixcontact.com/us/products/1227564>

## Standards and regulations

Flame resistance

IEC 60332-1-2

# NBC-R4OC/5,0-BC5/R4OC - Patch cable



1227564

<https://www.phoenixcontact.com/us/products/1227564>

## Approvals

To download certificates, visit the product detail page: <https://www.phoenixcontact.com/us/products/1227564>



**EAC**

Approval ID: 19060508



**UL Listed**

Approval ID: FILE E 335024



**cUL Listed**

Approval ID: FILE E 335024

**cULus Listed**

# NBC-R4OC/5,0-BC5/R4OC - Patch cable



1227564

<https://www.phoenixcontact.com/us/products/1227564>

## Classifications

### ECLASS

ECLASS-11.0	27060308
ECLASS-12.0	27060308
ECLASS-13.0	27060307

### ETIM

ETIM 9.0	EC002599
----------	----------

### UNSPSC

UNSPSC 21.0	26121600
-------------	----------

# NBC-R4OC/5,0-BC5/R4OC - Patch cable



1227564

<https://www.phoenixcontact.com/us/products/1227564>

## Environmental product compliance

China RoHS	Environmentally friendly use period: unlimited = EFUP-e
	No hazardous substances above threshold values

# NBC-R40C/5,0-BC5/R40C - Patch cable

1227564

<https://www.phoenixcontact.com/us/products/1227564>

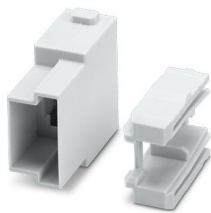


## Accessories

### HC-M-RJ45-AD-PC2-M - Contact insert module

1435214

<https://www.phoenixcontact.com/us/products/1435214>



Contact insert module, adapter for patch cables, the matching patch cables can be found in the accessories list

---

### NBC-R40C/0,3-BC5/R40C - Patch cable

1227558

<https://www.phoenixcontact.com/us/products/1227558>



Patch cable, degree of protection: IP20, cable length: 0.3 m, number of positions: 8, CAT5, connection method: Pierce connection, connection cross section: AWG 26- 26, cable outlet: straight, Ethernet

## NBC-R40C/5,0-BC5/R40C - Patch cable

1227564

<https://www.phoenixcontact.com/us/products/1227564>



## NBC-R40C/0,5-BC5/R40C - Patch cable

1227559

<https://www.phoenixcontact.com/us/products/1227559>



Patch cable, degree of protection: IP20, cable length: 0.5 m, number of positions: 8, CAT5, connection method: Pierce connection, connection cross section: AWG 26- 26, cable outlet: straight, Ethernet

---

## NBC-R40C/1,0-BC5/R40C - Patch cable

1227560

<https://www.phoenixcontact.com/us/products/1227560>



Patch cable, degree of protection: IP20, cable length: 1 m, number of positions: 8, CAT5, connection method: Pierce connection, connection cross section: AWG 26- 26, cable outlet: straight, Ethernet

## NBC-R40C/5,0-BC5/R40C - Patch cable

1227564

<https://www.phoenixcontact.com/us/products/1227564>



## NBC-R40C/1,5-BC5/R40C - Patch cable

1227561

<https://www.phoenixcontact.com/us/products/1227561>



Patch cable, degree of protection: IP20, cable length: 1.5 m, number of positions: 8, CAT5, connection method: Pierce connection, connection cross section: AWG 26- 26, cable outlet: straight, Ethernet

---

## NBC-R40C/2,0-BC5/R40C - Patch cable

1227562

<https://www.phoenixcontact.com/us/products/1227562>



Patch cable, degree of protection: IP20, cable length: 2 m, number of positions: 8, CAT5, connection method: Pierce connection, connection cross section: AWG 26- 26, cable outlet: straight, Ethernet

## NBC-R40C/5,0-BC5/R40C - Patch cable

1227564

<https://www.phoenixcontact.com/us/products/1227564>



## NBC-R40C/3,0-BC5/R40C - Patch cable

1227563

<https://www.phoenixcontact.com/us/products/1227563>



Patch cable, degree of protection: IP20, cable length: 3 m, number of positions: 8, CAT5, connection method: Pierce connection, connection cross section: AWG 26- 26, cable outlet: straight, Ethernet

---

## NBC-R40C/7,5-BC5/R40C - Patch cable

1227565

<https://www.phoenixcontact.com/us/products/1227565>



Patch cable, degree of protection: IP20, cable length: 7.5 m, number of positions: 8, CAT5, connection method: Pierce connection, connection cross section: AWG 26- 26, cable outlet: straight, Ethernet

## NBC-R40C/5,0-BC5/R40C - Patch cable

1227564

<https://www.phoenixcontact.com/us/products/1227564>



## NBC-R40C/0,3-BC6A/R40C - Patch cable

1227572

<https://www.phoenixcontact.com/us/products/1227572>



Patch cable, degree of protection: IP20, cable length: 0.3 m, number of positions: 8, 10 Gbps, CAT6<sub>A</sub>, connection method: Pierce connection, connection cross section: AWG 26- 26, cable outlet: straight, Ethernet

---

## NBC-R40C/0,5-BC6A/R40C - Patch cable

1227573

<https://www.phoenixcontact.com/us/products/1227573>



Patch cable, degree of protection: IP20, cable length: 0.5 m, number of positions: 8, 10 Gbps, CAT6<sub>A</sub>, connection method: Pierce connection, connection cross section: AWG 26- 26, cable outlet: straight, Ethernet

## NBC-R40C/5,0-BC5/R40C - Patch cable

1227564

<https://www.phoenixcontact.com/us/products/1227564>



## NBC-R40C/1,0-BC6A/R40C - Patch cable

1227575

<https://www.phoenixcontact.com/us/products/1227575>



Patch cable, degree of protection: IP20, cable length: 1 m, number of positions: 8, 10 Gbps, CAT6<sub>A</sub>, connection method: Pierce connection, connection cross section: AWG 26- 26, cable outlet: straight, Ethernet

---

## NBC-R40C/1,5-BC6A/R40C - Patch cable

1227578

<https://www.phoenixcontact.com/us/products/1227578>



Patch cable, degree of protection: IP20, cable length: 1.5 m, number of positions: 8, 10 Gbps, CAT6<sub>A</sub>, connection method: Pierce connection, connection cross section: AWG 26- 26, cable outlet: straight, Ethernet

## NBC-R4OC/5,0-BC5/R4OC - Patch cable

1227564

<https://www.phoenixcontact.com/us/products/1227564>



## NBC-R4OC/2,0-BC6A/R4OC - Patch cable

1227580

<https://www.phoenixcontact.com/us/products/1227580>



Patch cable, degree of protection: IP20, cable length: 2 m, number of positions: 8, 10 Gbps, CAT6<sub>A</sub>, connection method: Pierce connection, connection cross section: AWG 26- 26, cable outlet: straight, Ethernet

---

## NBC-R4OC/3,0-BC6A/R4OC - Patch cable

1227581

<https://www.phoenixcontact.com/us/products/1227581>



Patch cable, degree of protection: IP20, cable length: 3 m, number of positions: 8, 10 Gbps, CAT6<sub>A</sub>, connection method: Pierce connection, connection cross section: AWG 26- 26, cable outlet: straight, Ethernet

## NBC-R40C/5,0-BC5/R40C - Patch cable

1227564

<https://www.phoenixcontact.com/us/products/1227564>



## NBC-R40C/5,0-BC6A/R40C - Patch cable

1227583

<https://www.phoenixcontact.com/us/products/1227583>



Patch cable, degree of protection: IP20, cable length: 5 m, number of positions: 8, 10 Gbps, CAT6<sub>A</sub>, connection method: Pierce connection, connection cross section: AWG 26- 26, cable outlet: straight, Ethernet

---

## NBC-R40C/7,5-BC6A/R40C - Patch cable

1227585

<https://www.phoenixcontact.com/us/products/1227585>



Patch cable, degree of protection: IP20, cable length: 7.5 m, number of positions: 8, 10 Gbps, CAT6<sub>A</sub>, connection method: Pierce connection, connection cross section: AWG 26- 26, cable outlet: straight, Ethernet

## NBC-R4OC/5,0-BC5/R4OC - Patch cable

1227564

<https://www.phoenixcontact.com/us/products/1227564>



## NBC-R4OC/10,0-BC6A/R4OC - Patch cable

1227588

<https://www.phoenixcontact.com/us/products/1227588>



Patch cable, degree of protection: IP20, cable length: 10 m, number of positions: 8, 10 Gbps, CAT6<sub>A</sub>, connection method: Pierce connection, connection cross section: AWG 26- 26, cable outlet: straight, Ethernet

---

## NBC-R4OC/12,5-BC6A/R4OC - Patch cable

1227590

<https://www.phoenixcontact.com/us/products/1227590>



Patch cable, degree of protection: IP20, cable length: 12.5 m, number of positions: 8, 10 Gbps, CAT6<sub>A</sub>, connection method: Pierce connection, connection cross section: AWG 26- 26, cable outlet: straight, Ethernet

---

Phoenix Contact 2024 © - all rights reserved  
<https://www.phoenixcontact.com>

Phoenix Contact USA  
586 Fulling Mill Road  
Middletown, PA 17057, United States  
(+717) 944-1300  
[info@phoenixcon.com](mailto:info@phoenixcon.com)